

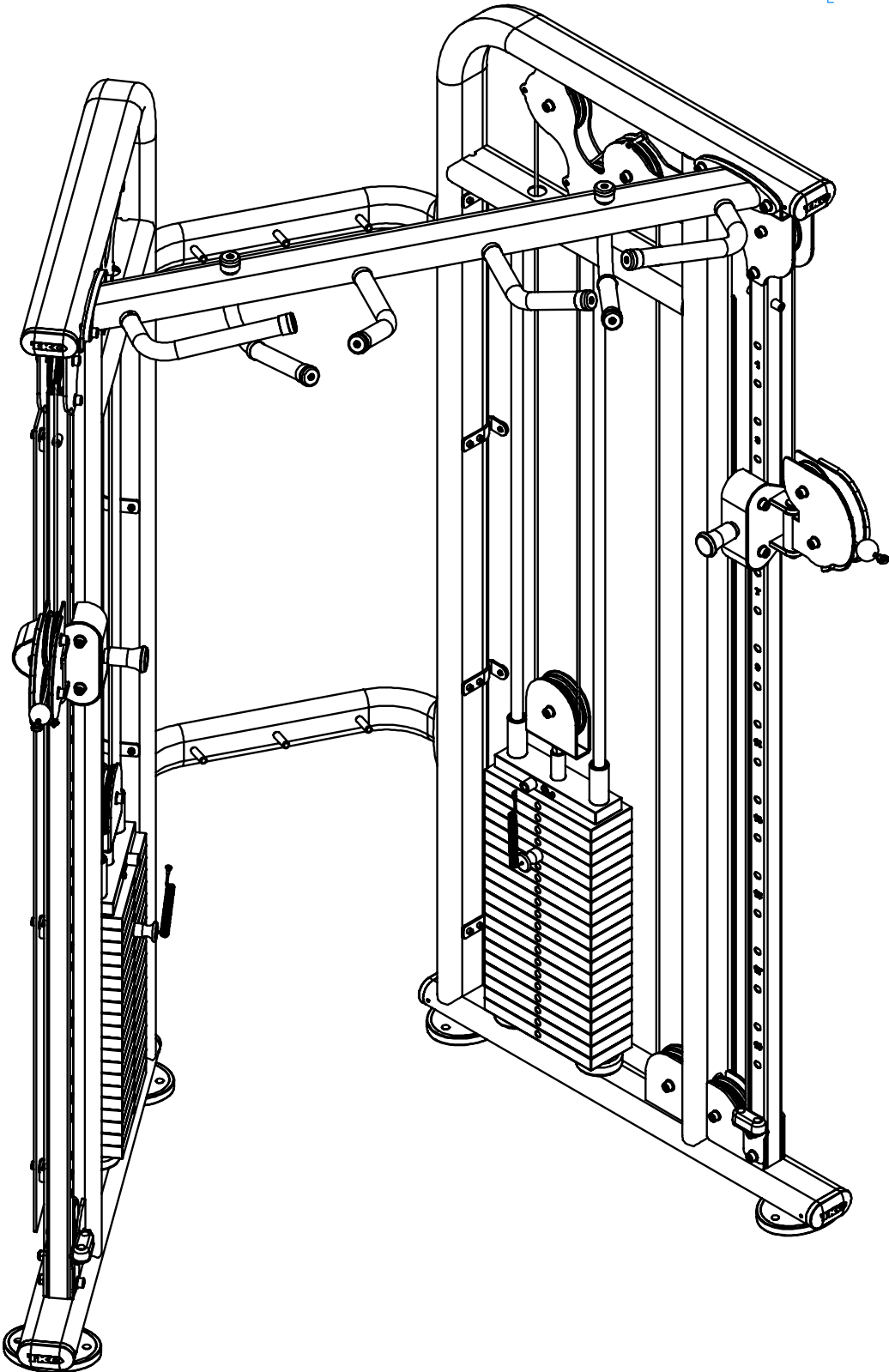


Functional Trainer

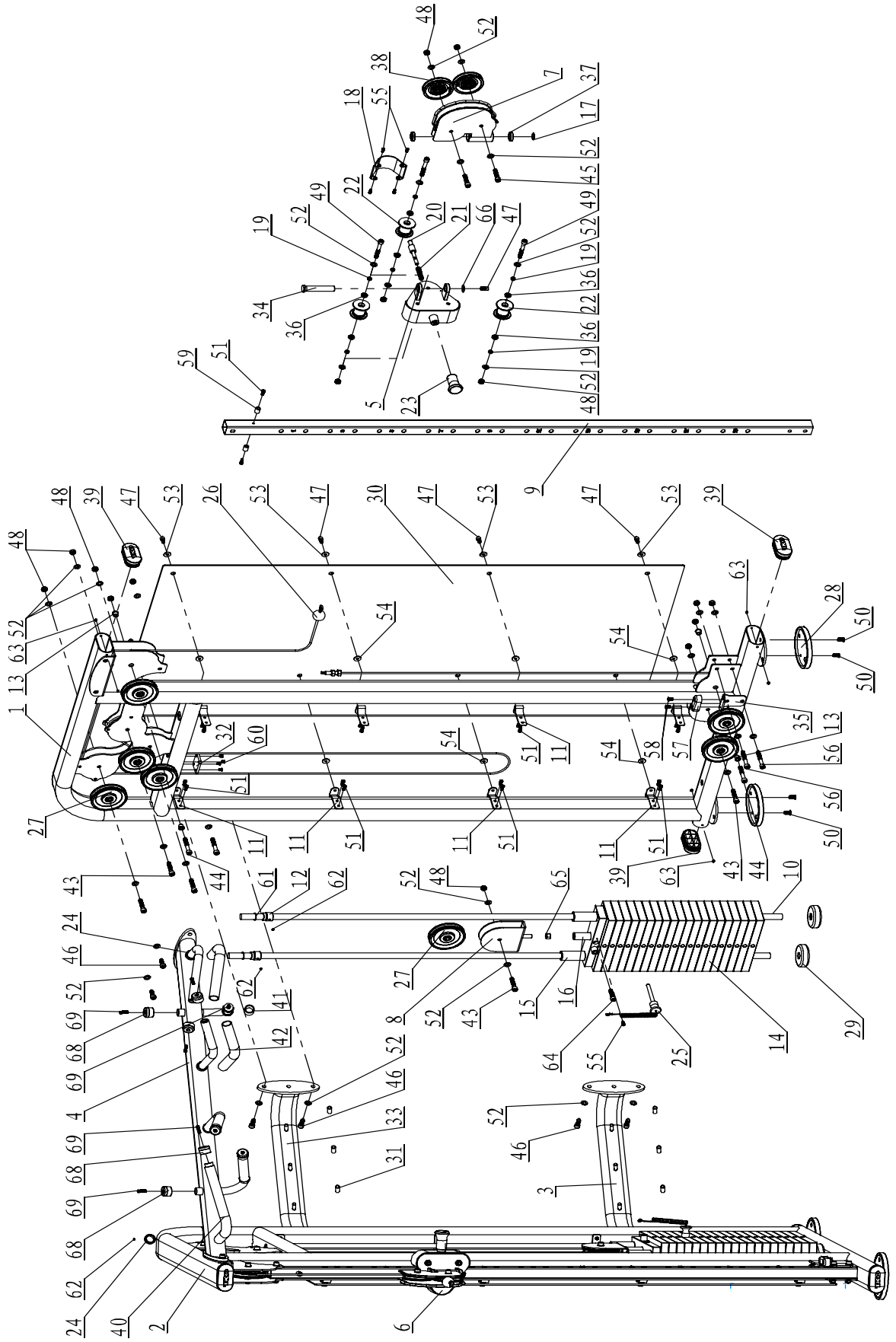
Model 9050

+ Owner's Manual

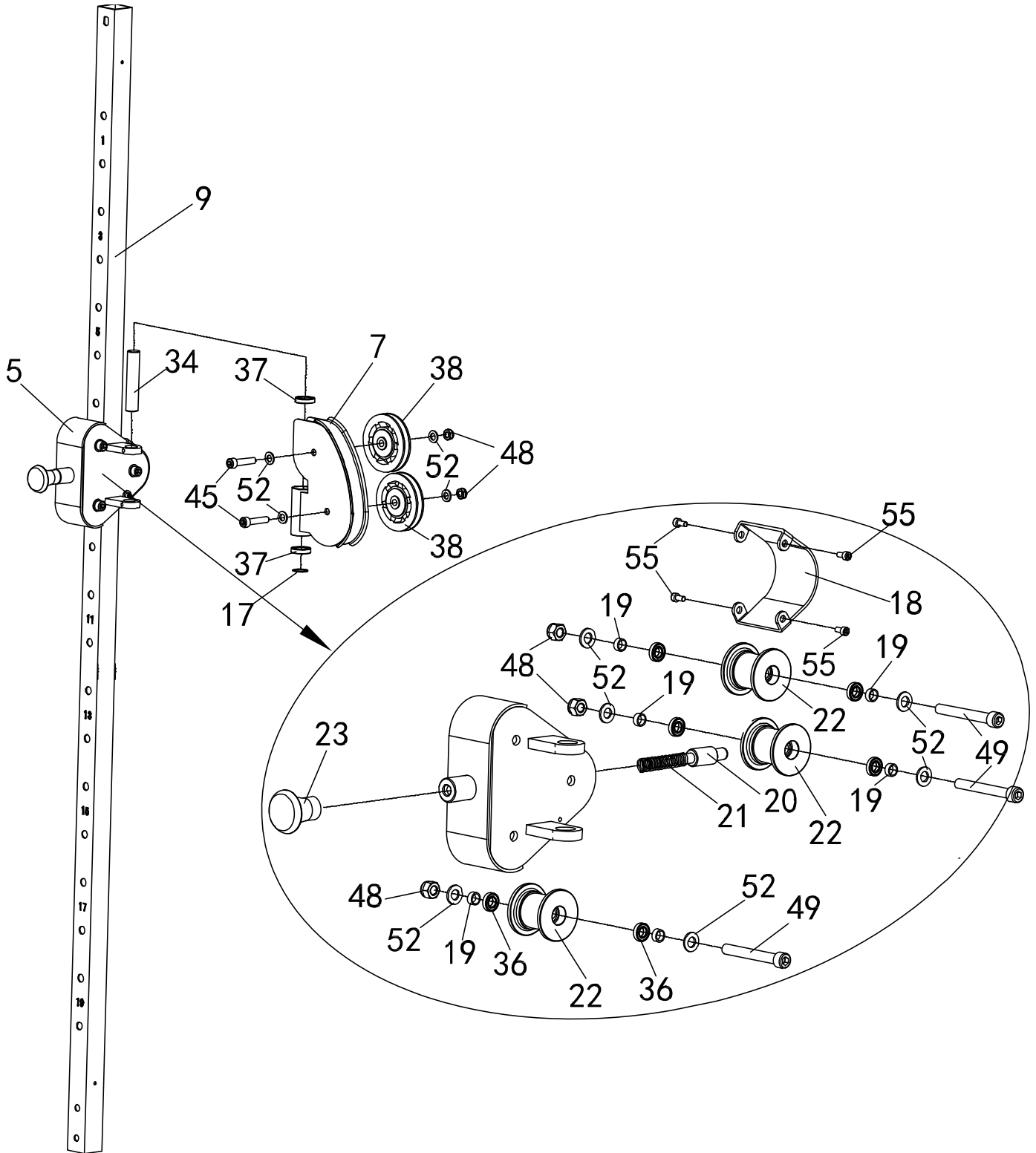
Product Diagram



Exploded Diagram



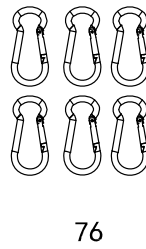
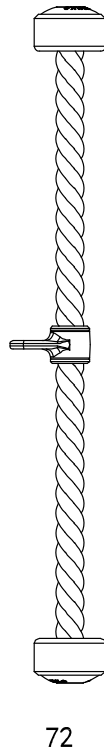
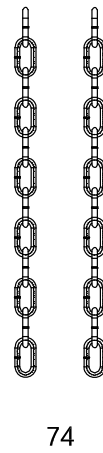
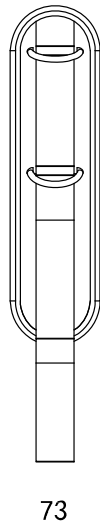
Parts List



Parts List

No.	Description	QTY	No.	Description	QTY
1	Left Upright Frame	1	36	Bearing 61800ZZ	12
2	Right Upright Frame	1	37	Bearing 61804ZZ	4
3	Rear Lower Support Frame	1	38	Pulley $\Phi 95 \times 24$	4
4	Top Support Frame	1	39	End Cap PT 50*100*3	6
5	Left Slide Frame	1	40	Foam Grip $\Phi 24 \times 3 \times 345 \text{mm}$	2
6	Right Slide Frame	1	41	Foam Grip $\Phi 24 \times 3 \times 160 \text{mm}$	2
7	Front Wheel Bracket	2	42	Foam Grip $\Phi 24 \times 3 \times 290 \text{mm}$	2
8	Pulley Frame	2	43	Hex Socket Head Bolt M10*50	10
9	Adjusting Square Tube F40*2	2	44	Hex Socket Head Bolt M10*65	6
10	Guide Rod $\Phi 20 \times 1763$	4	45	Hex Socket Head Bolt M10*45	4
11	Cleat for Shroud 86*25*4	16	46	Hex Socket Head Bolt M10*25	12
12	Guide Rod Bush $\Phi 30 \times \Phi 20.2 \times 30$	4	47	Hex Socket Head Bolt M8*15	18
13	Pulley Bushing $\Phi 18 \times 14$	8	48	Nut M10	30
14	Weight Stack 260*100*25.4	40	49	Hex Socket Head Bolt M10*75	6
15	Top Weight Plate 247*65*25.4	1	50	Hex Sunk Screw M8*20	8
16	Selector Rod $\Phi 25 \times 595$	2	51	Hex Socket Head Bolt M6*15	36
17	Bearing Washer $\Phi 25 \times \Phi 21 \times 1$	2	52	Flat Washer $\Phi 11 \times \Phi 20 \times 2$	64
18	Curl Cover 107.6*62*3	2	53	Big Washer $\Phi 8.6 \times \Phi 22 \times 2$	16
19	Bushing $\Phi 10.2 \times \Phi 12.7 \times 5.5$	12	54	Rubber Washer $\Phi 7 \times \Phi 2 \times 3 \text{T}$	16
20	Pin $\Phi 18 \times \Phi 12 \times 118 \times \text{M10}$	2	55	Hex Socket Head Bolt M5*10	10
21	Spring $\Phi 14 \times \Phi 1.5 \times 55$	2	56	Hex Socket Head Bolt M10*70	4
22	Roller $\Phi 54 \times 49$	6	57	Limited Cushion 30*70*20	2
23	Knob $\Phi 45 \times 66$	2	58	Cross Pan Screw M6*12	4
24	Ring $\Phi 33 \times 10$	6	59	Small Rubber Sleeve $\Phi 15 \times \Phi 6 \times 18$	4
25	Magnetic Pin $\Phi 10 \times 98$	2	60	Cross Sunk Screw M5*10	8
26	Cable $\Phi 5 \times 7600$	2	61	O-Ring $\Phi 19 \times 1.8$	4
27	Pulley $\Phi 115 \times 27.5$	14	62	Hex Cone Set Screw M6*4	10
28	PVC Foot Pad 169*129*16	4	63	Hex Cone Set Screw M6*6	12
29	Cushion $\Phi 80 \times 25$	4	64	Hex Socket Head Bolt M10*40	2
30	Shroud 1700*600*4	2	65	Flat Nut M12	2
31	Sleeve $\Phi 12 \times 55$	6	66	Big Washer $\Phi 9 \times \Phi 24 \times 2$	2
32	Rubber Bumper 60*50*6	2	67	Right Top Weight Plate	1
33	Rear Top Support Frame	1	68	End Cap $\Phi 34.5 \times \Phi 6.5 \times 25$	8
34	T-Shaft $\Phi 25 \times 102$	2	69	Hex Socket Head Bolt M6*20	8
35	Limited Plate 65*30*80*4	2			

Parts List



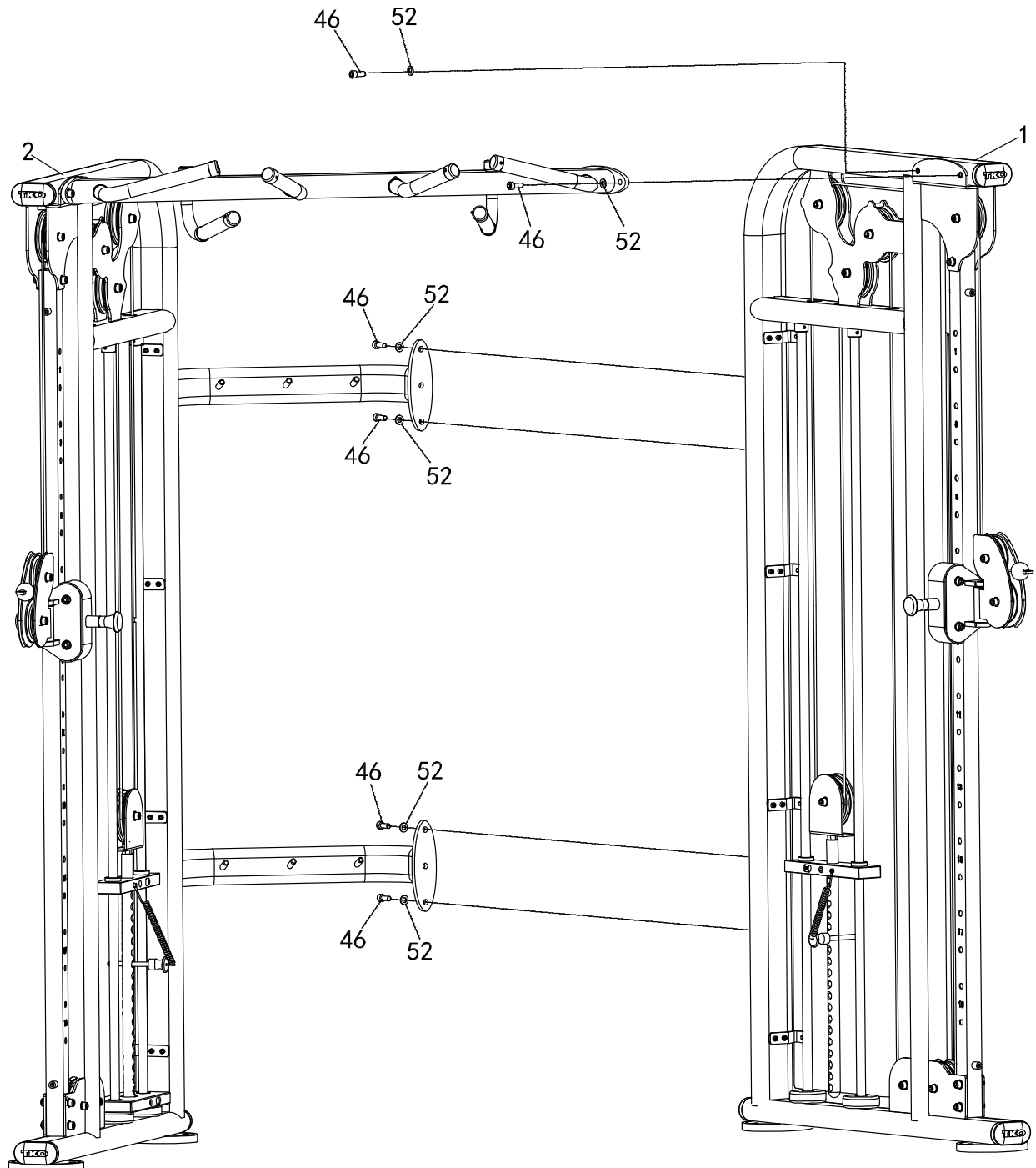
70	Long Bar	1
71	Short Handle	1
72	Tricep Rope	1
73	Ankle Strap	1
74	Chains	2
75	Hand Grips	2
76	Safety Hooks	6

Assembly

Note: Before starting assembly remove all parts and hardware from the carton, ensure you have everything according to the list.

Step 1

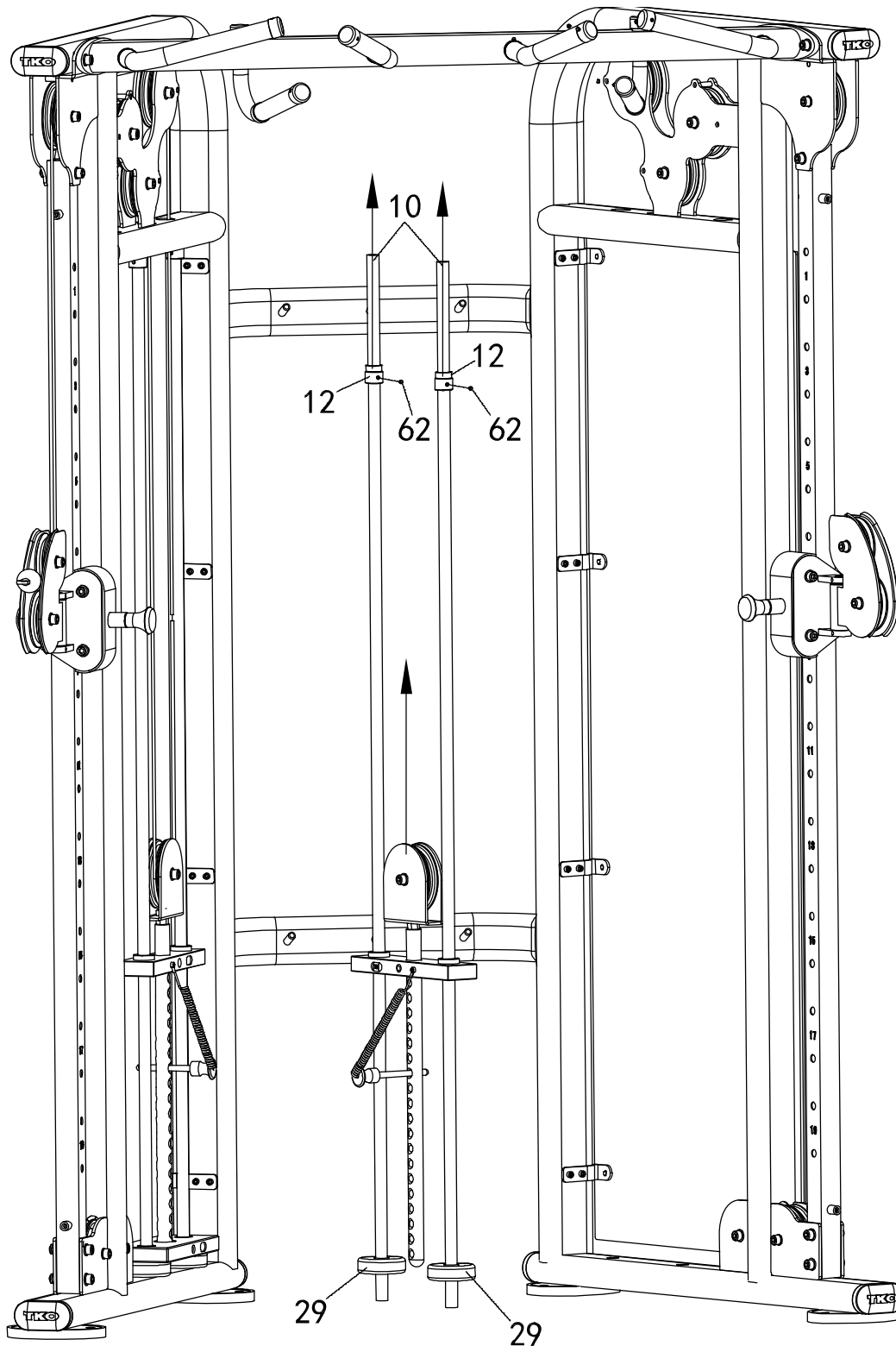
Install Rear Lower Support Frame (3), Rear Top Support Frame (33) and Rear Top Support Frame (4) onto Left Frame (2) and Right Frame (1), using Hex Bolt M10*25 (46) and Flat Washer $\Phi 11*\Phi 20*2$ (52).



Assembly

Step 2

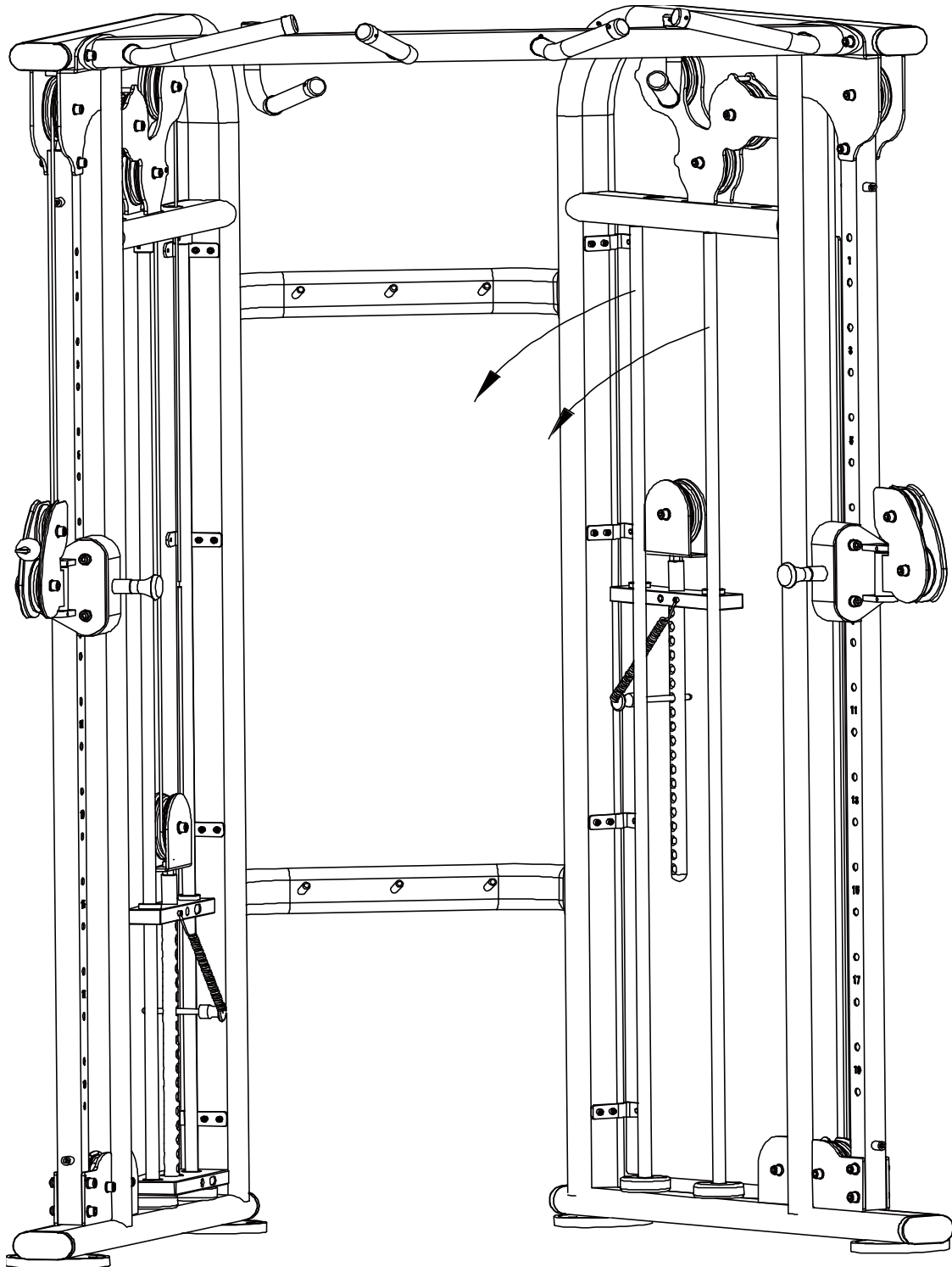
Loosen and remove 2 Guide Rod Bush (12) from the Guide Rod (10);
Then remove the Top Weight Plate (15) and The Selector Rod assembly from the Guide Rods.



Assembly

Step 3

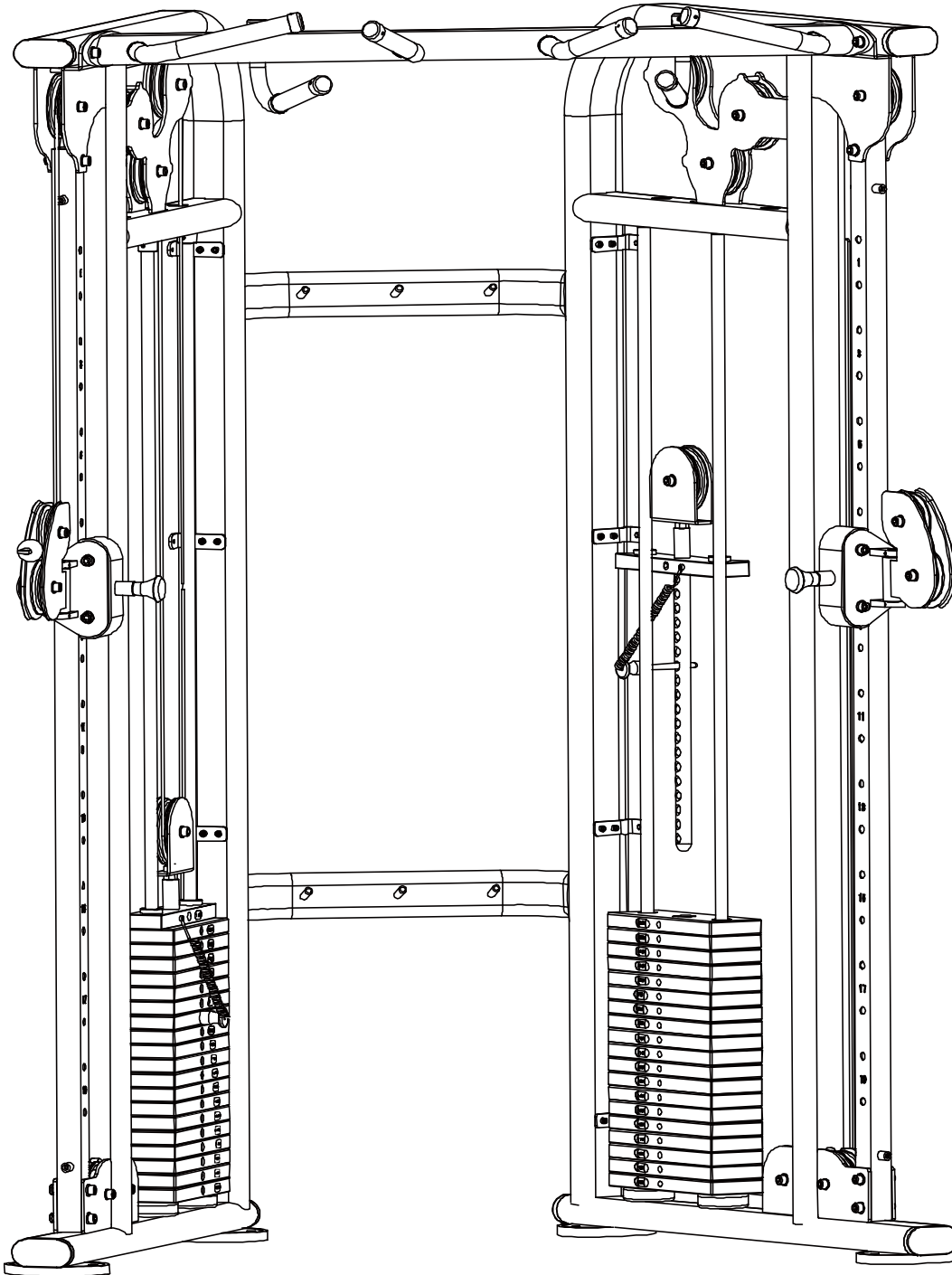
Re-Insert both Guide Rod (10) into the holes on the bottom of the Main Frame;
Make sure the Rubber Bumpers are at the bottom of the Guide Rods.



Assembly

Step 4

Install 20 Weight Stack (14) onto the Guide Rod (10);
Re-install the Top Weight Plate (15) and Selector Rod assembly onto the top of the Weight Stack;
Make Sure the holes of the Weight Stack for the Magnetic Lock Pin are the same direction.



Assembly

Step 5

First Re-install the Guide Rod Bush (12) that was removed in STEP 2;
Then tighten both Hex Screw M 6*4 (62) with a wrench;

Repeat the same procedure for the other side.

